

**INVITATION TO BIDS**

Sealed bids for the City of Valley Park (hereinafter "Owner") St. Louis Avenue Phase 3 Improvements, STP-9901(651) (hereinafter "Project") will be received by Valley Park City Hall, 55 Crescent Avenue, Valley Park, Missouri 63088, until 2:00 p.m. local time, on Thursday, November 7, 2024, at which time the bids will be publicly opened and read aloud.

The Scope of Work includes improvements to St. Louis Avenue within the City of Valley Park and provides for pavement preparation, milling, asphalt overlay, storm sewer improvements, concrete sidewalk, concrete curb and gutter, concrete driveway approaches, street lighting, pavement striping, traffic control and other incidental items and work described in the Project Manual, or reasonably inferable therefrom. The City of Valley Park anticipates issuing notice to proceed in the Winter 2024 or spring of 2025, weather permitting.

To ensure that you receive all addenda, request the bid documents by email from Mike Spalding at mspalding@cochraneng.com. Bid packages will be distributed electronically via a ftp link at no cost to the bidder. When requesting the link, you will be required to provide your company name, a contact person and phone number, a complete company address and an e-mail address to be added to the Plan Holders List and for receiving official bidding communications and addenda. If you are not on the Plan Holders List, you will not receive any addenda issued. Hard copies will not be available for purchase. Bidders may make printed copies of the bid documents (plans, project manual, and a bid packet) at their own expense. Project and bidding questions shall be conducted exclusively via e-mail. Any questions regarding this project must be submitted to: mspalding@cochraneng.com, by 4:00 pm local time on October 31, 2024. No written questions after this date or any verbal questions will be recognized.

A bid security in the amount of five percent (5%) of the bid amount must accompany each bid, in accordance with the Instructions to Bidders.

For a contractor to be awarded this project the contractor must have a fully responsive contractor questionnaire on file with the Missouri Highway and Transportation Commission at least 7 days prior to the bid opening date. All bidders must be on MoDOT's Qualified Contractor List per Section 102.2 of the 2023 Missouri Standard Specifications for Highway Construction. No Second Tier Subcontracting will be allowed.

The wage rates applicable to this project have been predetermined as required by law and are set forth in this specification. When Federal wage rates are applicable and included, this contract is subject to the "Work Hours Act of 1962", (P.L. 87-581: 76 Stat. 357) and implementing regulations. When state and federal wage rates are both required the higher of the two for each job classification shall be used.

Effective January 1, 2009 and pursuant to RSMo 285.530 (1), No business entity or employer shall knowingly employ, hire for employment, or continue to employ an unauthorized alien to perform work within the state of Missouri. The successful bidder must submit a sworn affidavit and documentation affirming the business entity's enrollment and participation in the federal work authorization program and that all of its employees working for the contracted services are not illegal immigrants.

Upon signing the contract, the successful contractor and any subcontractor performing the work shall provide a ten-hour Occupational Safety and Health Administration (OSHA) construction safety program for their on-site employees within sixty (60) days of beginning work on the construction project.

The City of Valley Park, Missouri hereby notifies all bidders that it will affirmatively ensure that in any contract entered into pursuant to this advertisement, businesses owned and controlled by socially and economically disadvantaged individuals will be afforded full opportunity to submit bids in response to this invitation and will not be discriminated against on the grounds of race, color, religion, creed, sex, age, ancestry, or national origin in consideration for an award.

The DBE Contract Goal for this project is 12%, and DBE firms must be certified by MoDOT to attain credit towards this contract goal. There is no On the Job Trainee goal.

**THE OWNER INTENDS TO AWARD THE CONTRACT TO THE LOWEST, RESPONSIVE, RESPONSIBLE BIDDER. THE OWNER RESERVES THE RIGHT TO REJECT ANY AND ALL BIDS, AND TO WAIVE ANY IRREGULARITIES IN THE BEST INTEREST OF THE OWNER WITH MODOT'S CONSENT.**

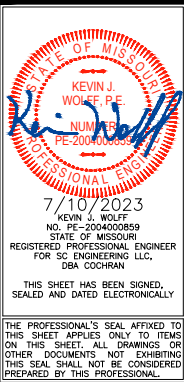
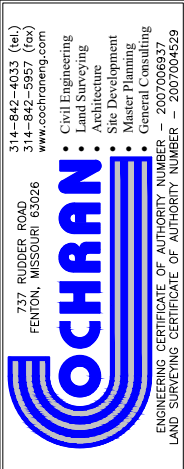
Drawing name: U:\SC20-1130 St. Louis Ave Phase 3, Valley Park, MO\AUTOCAD DRAWINGS\QUANTITY SHEET.dwg Tab: Q-1 Plotted on: Jul 10, 2023 - 11:28am Plotted by: MSpolding

QUANTITY SHEET

Bid No.	Spec. No.	Description	From STA	To STA	From STA	To STA	Unit	Quantity
ROADWAY ITEMS								
1	2013001	Tree and Stump Removal	25+70	25+70	-	-	EA	1
2	2022010	Removal of Improvements	11+38	31+02	0+24	2+95	LS	1
3	2038000	Earthwork	11+38	31+02	0+24	2+95	STA	22
4	4011209	Asphalt Pavement Surface Course, Hot Joints (BP-1)(2")(PG64-22)	11+38	31+02	-	-	TONS	700
5	4020520	Asphalt Pavement Leveling Course (BP-1)(1")(PG64-22)	11+38	31+02	-	-	TONS	350
6	4020000	Asphalt Pavement, 6" (BP-1)(PG64-22) Placed in (2) 3" Lifts (includes 4" of Type 5 aggregate base)	11+38	31+02	-	-	SF	400
7	4137000 4138000	Bituminous/PCCP Pavement Crack Sealing	11+38	31+02	-	-	LF	2,900
8	3101003	Gravel A (4")	16+44	18+69	-	-	SY	175
9	5021100	Concrete Pavement (6") Non-Reinforced	18+17	25+63	-	-	SY	500
10	6085000	Concrete Approach, 6" (Remove & Replace)	14+14	29+92	-	-	SF	4,900
11	6091053	Concrete Variable Height Curb & Variable Slope Gutter (3'-6")	18+97	30+78	-	-	LF	2,210
12	6091012	Concrete Vertical Curb, 6"	14+06	16+44	-	-	LF	130
13	6131000	Utility Cut Pavement Repair, (Type 1) 7" Concrete and 2" Temporary Patch	19+46	30+65	-	-	SY	310
14	JSP	Utility Cut Pavement Repair, (Type 2) 6" Concrete, Sand, and Relay Brick	-	-	0+24	2+95	SY	295
15	6131000	Full Depth Pavement (Repair), 7"	11+38	31+02	-	-	SY	300
16	6181000	Mobilization	11+38	31+02	0+24	2+95	LS	1
17	MSD SPEC	Sanitary Pipe, 8" SDR-35 PVC	29+59	29+60	-	-	LF	20
18	MSD SPEC	Sanitary Manhole 48"	29+59	29+60	-	-	EA	1
19	MSD SPEC	Storm Sewer 12" PP	18+83	30+89	0+34	2+65	LF	525
20	MSD SPEC	Storm Sewer 15" PP	19+50	20+44	-	-	LF	106
21	MSD SPEC	Storm Sewer 18" PP	20+48	22+16	-	-	LF	166
22	MSD SPEC	Storm Sewer 24" PP	22+21	25+14	-	-	LF	337
23	MSD SPEC	Storm Sewer 30" PP	25+18	28+62	-	-	LF	348
24	MSD SPEC	Storm Sewer 36" PP	28+66	30+76	0+24	2+95	LF	497
25	MSD SPEC	Grated Inlet and Side Intake, 42" Conc. Manhole	19+46	28+66	0+33	2+62	EA	11
26	MSD SPEC	Grated Inlet, 42" Conc. Manhole	29+57	30+78	-	-	EA	3
27	MSD SPEC	42" Conc. Manhole	25+19	25+22	-	-	EA	2
28	MSD SPEC	Grated Inlet and Side Intake, 48" Conc. Manhole	25+14	25+96	-	-	EA	2
29	MSD SPEC	48" Conc. Manhole	29+60	29+60	2+64	2+64	EA	2
30	MSD SPEC	Grated Inlet and Side Intake, 60" Conc. Manhole	26+82	28+66	-	-	EA	3
31	MSD SPEC	Grated Inlet, 60" Manhole	29+57	30+79	-	-	EA	3
32	MSD SPEC	60" Conc. Manhole	-	-	0+36	2+95	EA	5
33	MSD SPEC	Grated Inlet and Side Intake on Square Base	18+81	25+06	-	-	EA	14
34	MSD SPEC	Connect Storm or Sanitary to Existing Structure	22+30	30+74	-	-	EA	3
35	MSD SPEC	Grout Fill (Storm Sewer and Coal Chute)	22+30	30+74	-	-	CY	6
36	MSD SPEC	New Modified Curb Inlet Top on Existing Manhole	14+09	14+09	-	-	EA	1
37	MSD SPEC	New Modified Curb Inlet Top and 48" Manhole on Existing Storm Sewer	14+57	14+57	-	-	EA	1
38	MSD SPEC	MSD As-Builts	14+09	28+66	0+24	2+95	LS	1
39	8061007A	Inlet Check	14+10	31+02	0+24	2+95	EA	39
40	8061019	Silt Fence	17+41	21+80	-	-	LF	620
41	6221001	Coldmilling Bituminous Pavement for Removal of Surfacing (3 In. Thick or Less)	11+38	31+02	0+24	2+95	SY	6,138

Bid No.	Spec. No.	Description	From STA	To STA	From STA	To STA	Unit	Quantity
SIGNING/STRIPING/SIGNALS ITEMS								
42	6161006	"Road Work Ahead" Sign (W20-1)	11+38	31+02	0+24	2+95	EA	8
43	6161006	"Shoulder Work Ahead" Sign (W21-5)	11+38	31+02	0+24	2+95	EA	4
44	6161006	"Flagger" Sign (W20-7a)	11+38	31+02	0+24	2+95	EA	4
45	6161006	"One Lane Road Ahead" Sign (W20-4)	11+38	31+02	0+24	2+95	EA	4
46	6161006	"End Road Work" Sign (G20-2)	11+38	31+02	0+24	2+95	EA	4
47	6161006	"Sidewalk Closed" Sign (R9-9)	11+38	31+02	0+24	2+95	EA	4
48	6161099	Changeable Message Sign with Communication Interface, Contractor Furnished, Contractor Retained	11+38	31+02	-	-	EA	2
49	6200000	Pavement Marking - Railroad Crossing Symbol, White	15+40	17+87	-	-	EA	2
50	6200026	Pavement Marking - Straight Left/Right Arrow White (Standard Waterborne)	11+71	11+77	-	-	EA	1
51	6201014	Pavement Marking 24" - Stop Bar White (Standard Waterborne)	15+22	22+15	-	-	LF	155
52	6201011	Pavement Marking 12" - Crosswalk White (Standard Waterborne)	21+77	31+02	-	-	LF	445
53	6201002 6201005	Pavement Marking 4" - Lane Lines White or Yellow (Highbuild Waterborne)	11+38	31+02	-	-	LF	3,805
54	9031200	Sign Relocation on New Post (Per location, regardless of number of signs)	18+03	30+67	-	-	EA	10
BICYCLE/PEDESTRIAN FACILITY ITEMS								
55	6086000	Concrete Sidewalk, 4"	14+06	30+74	-	-	SF	17,466
56	6086000	Concrete Curb Ramp, 6"	16+46	30+75	-	-	SF	2,133
57	6081012	Detectable Warning Device	16+48	30+74	-	-	SF	225
58	7034009	Concrete Retaining Wall (Includes concrete, reinforcing steel)	16+60	16+65	-	-	CF	62
59	JSP	Aluminum Pedestrian Guardrail 42" with Handrail (Black)	16+53	16+65	-	-	LF	65
60	JSP	Aluminum Pedestrian Guardrail 42" (Black)	16+38	16+94	-	-	LF	145
LANDSCAPING/STREETSCAPING ITEMS								
61	8031000	Sodding	11+38	31+02	0+24	2+95	SY	260
62	JSP	Amended Soils	19+05	21+86	-	-	SY	205
63	9011000	Street Light with Pedestrian Light (Non-Decorative)	18+37	29+92	-	-	EA	9
64	9011000	Concrete Base for Street Light	18+37	29+92	-	-	EA	9
65	9011000	Handhole	19+78	25+87	-	-	EA	4
66	9011000	Load Center	21+58	21+60	-	-	EA	1
67	9011000	Underground Cable (in 2" PVC Conduit)	18+37	29+92	-	-	LF	1,665
68	9011000	Underground Conduit (2" Spare)	19+80	21+58	-	-	LF	200
69	9011000	Underground Conduit (3" Spare)	29+44	29+44	-	-	LF	275
3RD STREET PAVEMENT (Non Federally Reimbursable)								
70	JSP	Remove and Reinstall Brick Pavers (Includes 6" Concrete and Sand Bed)	-	-	0+24	2+75	SY	377
71	5021100	Concrete Pavement (11-1/2") Non-Reinforced	-	-	0+24	2+80	SY	195
DECORATIVE STREET LIGHTING UPGRADE (Non Federally Reimbursable)								
72	JSP	Upgrade to Decorative Street Light with Pedestrian Light	18+37	29+92	-	-	EA	9

22MSD-00440  
BASE MAP-26P1



ST. LOUIS AVE. IMPROVEMENTS PH. 3  
FEDERAL PROJECT NO. STP-9901(651)  
CITY OF VALLEY PARK, MISSOURI

QUANTITY SHEET	DATE:	REVISION:	DWN. BY:	APPD. BY:
			K.J.W.	M.D.S.
	DATE:			
	JULY 2023			
	SCALE:			
	NO SCALE			
	PROJ. NO:			
	SC20-1130			
	DWG. NO:			
	Q-1			