
INVITATION TO BIDS

Sealed bids for the City of Bonne Terre (hereinafter "Owner") W. School Street (Highway 47) Sidewalk Improvements (hereinafter "Project") will be received by Bonne Terre City Hall, 118 Allen Street, Bonne Terre, Missouri 63628, until 2:00 p.m. local time, on Tuesday, March 18, 2025, at which time the bids will be publicly opened and read aloud.

The Scope of Work includes sidewalk improvements to W. School Street within the City of Bonne Terre and provides for concrete sidewalk, curb and gutter, concrete driveway approach, concrete pavement, storm sewer improvements, street lighting, pavement striping, traffic control and other incidental items and work described in the Project Manual, or reasonably inferable therefrom. The City of Bonne Terre anticipates issuing notice to proceed in the spring of 2025, dependent on weather.

To ensure that you receive all addenda, request the bid documents by email from Becky Toney at btoney@cochraneng.com. Bid packages will be distributed electronically at no cost to the bidder. When requesting the documents, you will be required to provide your company name, a contact person and phone number, a complete company address and an e-mail address to be added to the Plan Holders List and for receiving official bidding communications and addenda. If you are not on the Plan Holders List, you will not receive any addenda issued. Hard copies will not be available for purchase. Bidders may make printed copies of the bid documents (plans, project manual, and a bid packet) at their own expense. Project and bidding questions shall be conducted exclusively via e-mail. Any questions regarding this project must be submitted to: mspalding@cochraneng.com, by 4:00 pm local time on March 11, 2025. No written questions after this date or any verbal questions will be recognized.

A bid security in the amount of five percent (5%) of the bid amount must accompany each bid, in accordance with the Instructions to Bidders.

For a contractor to be awarded this project the contractor must have a fully responsive contractor questionnaire on file with the Missouri Highway and Transportation Commission at least 7 days prior to the bid opening date. All bidders must be on MoDOT's Qualified Contractor List per Section 102.2 of the 2024 Missouri Standard Specifications for Highway Construction. No Second Tier Subcontracting will be allowed.

The wage rates applicable to this project have been predetermined as required by law and are set forth in this specification. When Federal wage rates are applicable and included, this contract is subject to the "Work Hours Act of 1962", (P.L. 87-581: 76 Stat. 357) and implementing regulations. When state and federal wage rates are both required the higher of the two for each job classification shall be used.

Effective January 1, 2009 and pursuant to RSMo 285.530 (1), No business entity or employer shall knowingly employ, hire for employment, or continue to employ an unauthorized alien to perform work within the state of Missouri. The successful bidder must submit a sworn affidavit and documentation affirming the business entity's enrollment and participation in the federal work authorization program and that all of its employees working for the contracted services are not illegal immigrants.

Upon signing the contract, the successful contractor and any subcontractor performing the work shall provide a ten-hour Occupational Safety and Health Administration (OSHA) construction safety program for their on-site employees within sixty (60) days of beginning work on the construction project.

The City of Bonne Terre, Missouri hereby notifies all bidders that it will affirmatively ensure that in any contract entered into pursuant to this advertisement, businesses owned and controlled by socially and economically disadvantaged individuals will be afforded full opportunity to submit bids in response to this invitation and will not be discriminated against on the grounds of race, color, religion, creed, sex, age, ancestry, or national origin in consideration for an award.

The DBE Contract Goal for this project is 3%, and DBE firms must be certified by MoDOT to attain credit towards this contract goal. There is no On the Job Trainee goal.

THE OWNER INTENDS TO AWARD THE CONTRACT TO THE LOWEST, RESPONSIVE, RESPONSIBLE BIDDER. THE OWNER RESERVES THE RIGHT TO REJECT ANY AND ALL BIDS, AND TO WAIVE ANY IRREGULARITIES IN THE BEST INTEREST OF THE OWNER WITH MODOT'S CONSENT.

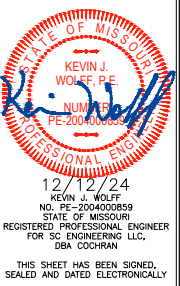
QUANTITY SHEET

Bid No.	Spec. No.	Description	From STA	To STA	Unit	Quantity
ROADWAY ITEMS						
1	2022010	Removal of Improvements	11+49	18+49	LS	1
2	2038000	Earthwork	11+49	18+49	STA	7.0
3	5021100	Concrete Pavement, 8" (remove and replace includes aggregate base)	11+50	18+49	SF	7,050
4	6085000	Concrete Approach, 7" (remove and replace, includes aggregate base)	12+46	16+50	SF	700
5	6091053	Concrete Curb and Gutter, 2'-6" (remove and replace, includes aggregate base)	11+62	14+23	LF	465
6	6091012	Concrete Vertical Curb, 6" (remove and replace, includes aggregate base)	11+49	18+46	LF	795
7	6091012	Concrete Vertical Curb, 12" (remove and replace, includes aggregate base)	11+49	18+46	LF	220
8	6143020	Storm Sewer Structure (PVC Manhole with 2' X 3' Grated Inlet)	15+78	17+17	EA	4
9	6143020	Storm Sewer Structure (PVC Manhole with 2' X 3' Grated Inlet with Side Intake)	15+36	15+36	EA	1
10	6161025	Channelizers (Trimline)	11+49	18+49	EA	100
11	6181000	Mobilization	11+49	18+49	LS	1
12	7261012	Storm Sewer (12" Class A)	15+36	17+17	LF	308
13	8061019	Silt Fencing	11+49	18+49	LF	545
14	8061007A	Inlet Check	15+36	17+17	EA	5
SIGNING/STRIPING/SIGNALS ITEMS						
15	6161006	"Road Work Ahead" Sign (W20-1)	11+49	18+49	EA	3
16	6161006	"Detour Ahead" Sign (W20-2)	11+49	18+49	EA	1
17	6161006	"Shoulder Work Ahead" Sign (W21-5)	11+49	18+49	EA	2
18	6161006	"Flagger Symbol" Sign (W20-7a)	11+49	18+49	EA	2
19	6161006	"Road Closed" Sign (R11-2R)	11+49	18+49	EA	1
20	6161006	"End Detour" Sign (M4-8A Custom)	11+49	18+49	EA	1
21	6161006	Large Arrow Left (W1-6L)	11+49	18+49	EA	6
22	6161006	Large Arrow Right (W1-6R)	11+49	18+49	EA	5
23	6161006	No Right Turn (R3-1)	11+49	18+49	EA	4
24	6161006	No Left Turn (R3-2)	11+49	18+49	EA	4
25	6161006	Detour (MO 4-10)	11+49	18+49	EA	1
26	6161006	Stop (R1-1)	11+49	18+49	EA	2
27	6161006	Detour Sign Straight (M4-9 Custom)	11+49	18+49	EA	6
28	6161006	Detour Sign Right (M4-9R Custom)	11+49	18+49	EA	3
29	6161006	Detour Sign Left (M4-9L Custom)	11+49	18+49	EA	2
30	6161031	Type III Moveable Barricade with Type C Warning Lights	11+49	18+49	EA	2
31	6161099	Changeable Message Sign with Communication Interface Contractor Furnished, Contractor Retained	11+49	18+49	EA	2
32	6206000	Pavement Marking, Continental Striping (White, Standard Waterborne)	11+49	18+44	SF	200
33	6206124A	Pavement Marking 24" - Stop Bar (White, Standard Waterborne)	18+31	18+31	LF	16
34	9031200	Sign Relocation on New Post (per location, regardless of the number of signs)	11+61	18+48	EA	8
35	9031200	Sign Removal (per location, regardless of the number of signs)	15+45	15+49	EA	2
36	9035000	Crosswalk Sign (W11-2)	11+33	15+55	EA	4
37	9035000	"Downward Arrow" Sign (W16-7pL)	11+33	15+55	EA	4

Bid No.	Spec. No.	Description	From STA	To STA	Unit	Quantity
BICYCLE/PEDESTRIAN FACILITY ITEMS						
38	6071012A	Pedestrian Fence, 42" (Chain-link, Galvanized)	11+66	12+40	LF	70
39	6081012	Detectable Warning Devices	11+50	18+48	SF	145
40	6086000	Concrete Sidewalk, 4" (Remove and Replace, includes aggregate base)	11+50	18+49	SF	8,255
41	6086000	Stamped Concrete (Colored)(includes aggregate base)	11+50	18+49	SF	2,270
42	6086100	Concrete Steps (includes aggregate base)	11+73	18+39	EA	8
LANDSCAPING/STREETSCAPING ITEMS						
43	8031000	Seed, Mulch and Fertilize	11+49	18+48	SY	335
44	9011000	Hand Hole, 13"x24"	15+65	15+65	EA	2
45	9011000	Underground Cable in Conduit, 1-1/2", 2" or 2 1/2"	11+49	18+48	LF	1,630
46	9011000	Load Center	15+65	15+65	EA	1
47	9011000	Street Light Assembly	11+49	18+48	EA	10
48	9011000	Concrete Streetlight Base	11+49	18+48	EA	10
49	JSP	Wrought Iron Fencing	12+40	13+05	LF	69
50	JSP	Brick Sill (44 W. School St.)	13+42	13+80	LF	28
51	JSP	Thin Brick Veneer (44 W. School St.)	13+42	13+80	SF	42

Drawing name: U:\SC23-1483 W. School St. TAP-9900(097) Sidewalks, Bonne Terre, MO\AUTOCAD DRAWINGS\QUANTITY SHEET.dwg Tab: Q-1 Plotted on: Feb 05, 2025 - 11:36am Plotted by: kwloff

314-842-4033 (tel.)
314-842-5957 (fax)
www.cochraneng.com
COCHRAN
Civil Engineering
Land Surveying
Architecture
Site Development
Master Planning
General Consulting
ENGINEERING CERTIFICATE OF AUTHORITY NUMBER - 2007006937
LAND SURVEYING CERTIFICATE OF AUTHORITY NUMBER - 2007004529



12/12/24
KEVIN J. WOLFF
NO. PE-200400859
STATE OF MISSOURI
REGISTERED PROFESSIONAL ENGINEER
FOR SC ENGINEERING LLC,
DBA COCHRAN
THIS SHEET HAS BEEN SIGNED,
SEALED AND DATED ELECTRONICALLY.

THE PROFESSIONAL'S SEAL AFFIXED TO THIS SHEET APPLIES ONLY TO ITEMS ON THIS SHEET. ALL DRAWINGS OR OTHER DOCUMENTS NOT EXHIBITING THIS SEAL SHALL NOT BE CONSIDERED PREPARED BY THIS PROFESSIONAL.

W. SCHOOL ST. (HWY. 47) SIDEWALKS
FEDERAL PROJECT NO. TAP-9900(097)
CITY OF BONNE TERRE, MISSOURI

QUANTITY SHEET	DATE:	REVISION:
DWN BY:	S.R.B.	APPD BY:
		K.J.W.
DATE:	DECEMBER 2024	
SCALE:	NO SCALE	
PROJ. NO.:	SC23-1483	
DWG. NO.:	Q-1	